

<b>Criteria 7.1.5:</b>	Green campus initiatives. 1. Restricted entry of automobiles 2. Use of Bicycles/ Battery powered vehicles 3. Pedestrian Friendly pathways 4. Ban on use of Plastic 5. landscaping with trees and plants
<b>Findings of DVV</b>	Provide Circulars for the implementation of the Restricted entry of automobiles, Battery-powered vehicles, Pedestrian-friendly pathways, Ban on the use of Plastics, Landscaping with trees and plants for 2020-21 and any other supporting document.
<b>Response/ Clarification</b>	1) Geo tagged photographs/videos of the facilities are attached. <b>(Appendix-I)</b> 2) Circulars for the implementation of the initiatives and any other supporting document. <b>(Appendix-II)</b>

GA2  
IQAC Coordinator

IQAC Coordinator  
S.B.Patil College of Engineering  
Vangali, Tal. Indapur, Dist. Pune





Principal

PRINCIPAL  
S.B.Patil College of Engineering  
Vangali, Tal. Indapur, Dist. Pune

# Appendix-I



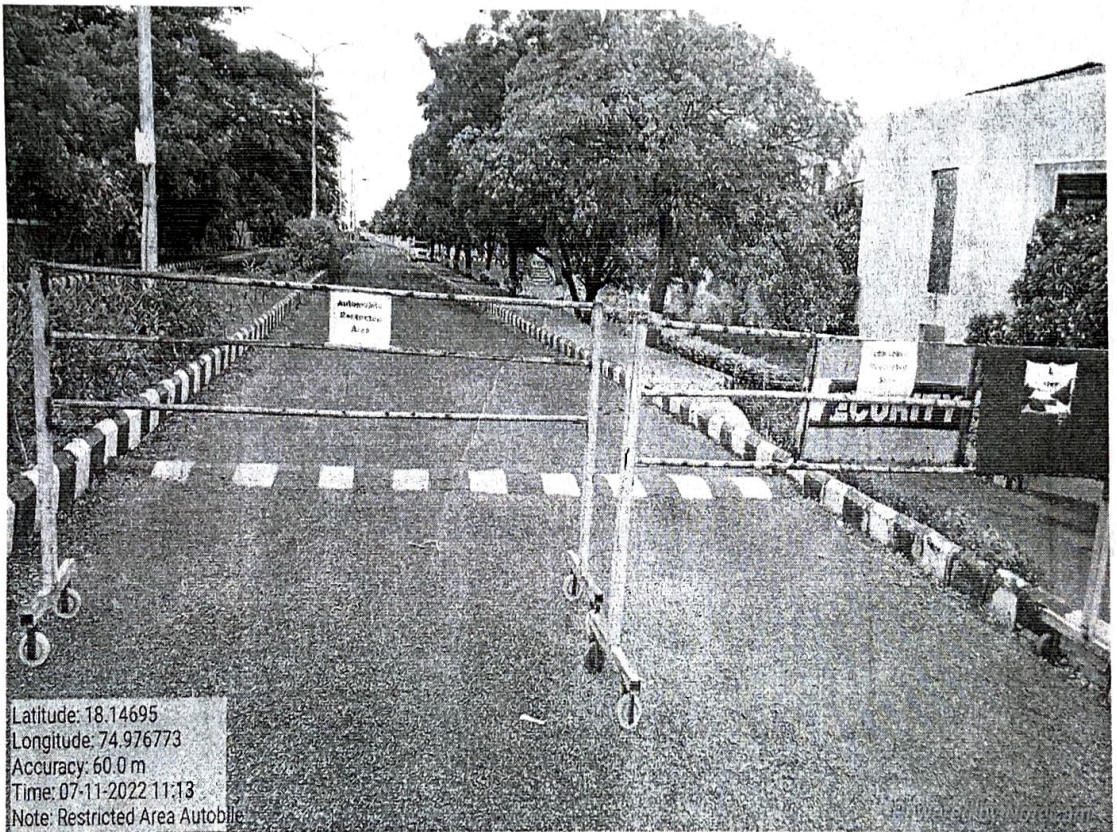
SHAHAJIRAO PATIL VIKAS PRATISHTHAN

**S. B. PATIL COLLEGE OF ENGINEERING, INDAPUR, DIST: PUNE.**

#### 7.1.5 Green campus initiatives.

1. Restricted entry of automobiles
2. Use of Bicycles/ Battery powered vehicles
3. Pedestrian Friendly pathways
4. Landscaping with trees and plants

##### 1. Restricted entry of automobiles



**Snap 1: Restricted entry of automobiles**

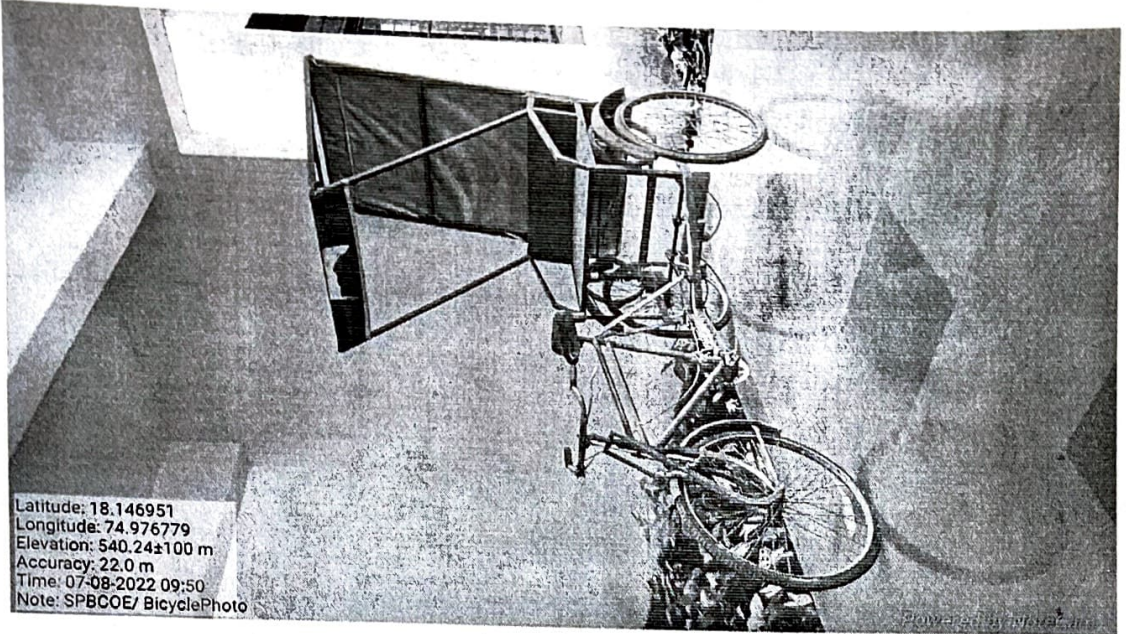




SHAHAJIRAO PATIL VIKAS PRATISHTHAN

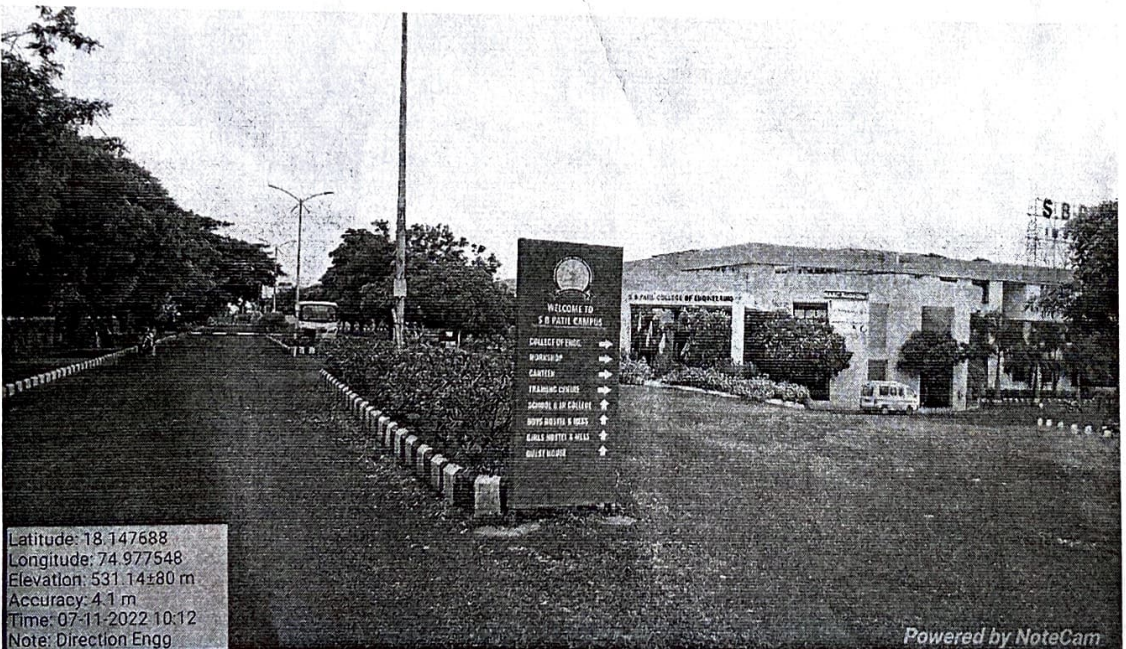
**S. B. PATIL COLLEGE OF ENGINEERING, INDAPUR, DIST: PUNE.**

## 2. Use of Bicycles/ Battery powered vehicles



Snap 2: Use of Bicycles/ Battery powered vehicles

## 3. Pedestrian Friendly pathways



Snap 3: Pedestrian Friendly pathways





SHAHAJIRAO PATIL VIKAS PRATISHTHAN

**S. B. PATIL COLLEGE OF ENGINEERING, INDAPUR, DIST: PUNE.**

**4. Landscaping with trees and plants**



**Snap 4: Landscaping with trees and plants**

Principal

**PRINCIPAL**

**S.B.Patil College of Engineering  
Vangali, Tal.Indapur,Dist.Pune**

# Appendix-II



SHAHAJIRAO PATIL VIKAS PRATISHTHAN

**S. B. PATIL COLLEGE OF ENGINEERING, INDAPUR, DIST: PUNE.**

### Notice

All the staff members and students are hereby informed to restrict the use of automobiles as far as possible to keep the environment pollution free. Further all the teaching and non-teaching staff is hereby requested to use car-pooling or public transport while coming from Indapur or nearby areas and students are also requested to use public transport or bicycles.

All of you are requested to seriously adhere to this policy or initiative of the college as it will be very beneficial for the conservation of environment in the long run.

*G.A. 2.*  
IQAC Coordinator

Mrs. A.B. Gavali

*Dr. S. T. Shirkande*  
Principal

Dr. S. T. Shirkande

**PRINCIPAL**

**S.B. Patil College of Engineering  
Vangali, Tal. Indapur, Dist. Pune**

**IQAC Coordinator  
S.B. Patil College of Engineering  
Vangali, Tal. Indapur, Dist. Pune**







SHAHAJIRAO PATIL VIKAS PRATISHTHAN


**S. B. PATIL COLLEGE OF ENGINEERING, INDAPUR, DIST: PUNE.**

### **Plastic Ban Notice**

All the students, faculty and staff is hereby informed to note that w.e.f 27/03/2019 as per Maharashtra Government Notification Regarding Plastic Ban, Plastic is banned in college campus with immediate effect. All are instructed to keep the premises of the college free of plastic. Hereafter only cloth bags or bio-degradable material bags will be allowed. All are requested to seriously adhere to this policy/initiative, otherwise strict disciplinary action will be taken by the authority.

GA2  
IQAC Coordinator

**S.B. Patil College of Engineering  
Vangali, Tal. Indapur, Dist. Pune**

  
Principal

Dr. S. T. Shirkande  
**PRINCIPAL**  
**S.B. Patil College of Engineering  
Vangali, Tal. Indapur, Dist. Pune**





# Landscaping with Trees and Plants



Latitude: 18.14677  
Longitude: 74.976662  
Elevation: 497.4±16 m  
Accuracy: 16.2 m  
Time: 13-07-2022 14:21

Powered by NoteCam





Latitude: 18.147079  
Longitude: 74.977044  
Elevation: 514.62±8 m  
Accuracy: 12.3 m  
Time: 13-07-2022 14:13

Powered by NoteCam



Latitude: 18.146681  
Longitude: 74.976857  
Elevation: 530.45±12 m  
Accuracy: 30.1 m  
Time: 13-07-2022 14:15

Powered by NoteCam





Latitude: 18.146551  
Longitude: 74.976755  
Elevation: 531.21±12 m  
Accuracy: 16.2 m  
Time: 13-07-2022 14:15

Powered by NoteCam



Latitude: 18.146973  
Longitude: 74.976805  
Elevation: 509.39±16 m  
Accuracy: 36.7 m  
Time: 13-07-2022 14:21

Powered by NoteCam

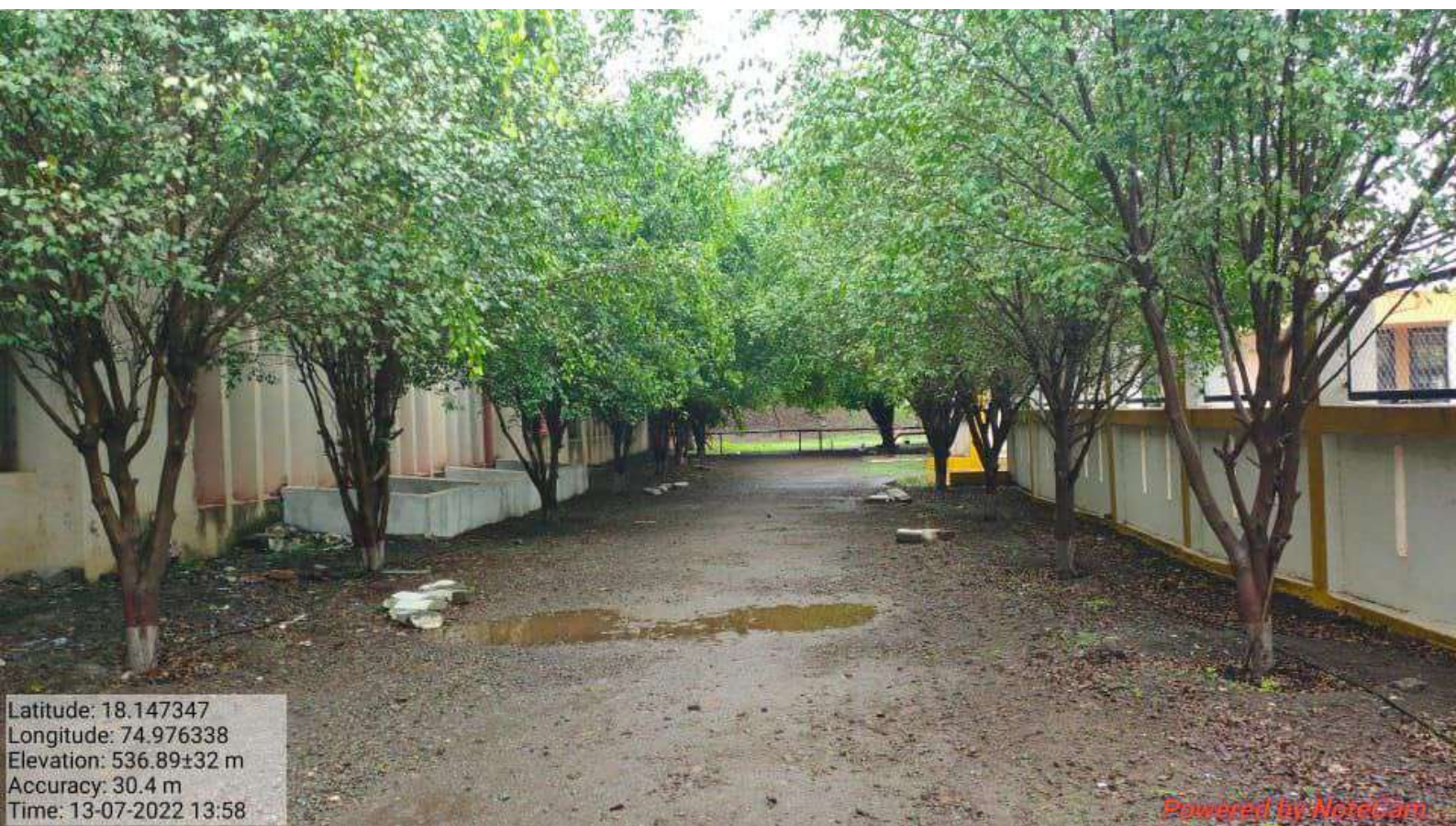




Latitude: 18.146891  
Longitude: 74.976698  
Elevation: 571.76±48 m  
Accuracy: 51.1 m  
Time: 13-07-2022 14:21

Powered by NoteCam





Latitude: 18.147347  
Longitude: 74.976338  
Elevation: 536.89±32 m  
Accuracy: 30.4 m  
Time: 13-07-2022 13:58

Powered by NoteCam



Latitude: 18.14813  
Longitude: 74.976397  
Elevation: 513.52±8 m  
Accuracy: 208.3 m  
Time: 13-07-2022 14:00

Powered by NoteCam





Latitude: 18.148237  
Longitude: 74.976493  
Elevation: 512.36±12 m  
Accuracy: 18.7 m  
Time: 13-07-2022 14:01

Powered by NoteCam



Latitude: 18.147435  
Longitude: 74.976535  
Elevation: 526.0±12 m  
Accuracy: 27.6 m  
Time: 13-07-2022 13:56

Powered by NoteCam





Latitude: 18.148227  
Longitude: 74.976604  
Elevation: 509.3±12 m  
Accuracy: 1200.0 m  
Time: 13-07-2022 14:01

Powered by NoteCam





Latitude: 18.147961  
Longitude: 74.976428  
Elevation: 511.52±12 m  
Accuracy: 25.1 m  
Time: 13-07-2022 14:00

Powered by NoteCam



Latitude: 18.14768  
Longitude: 74.976594  
Elevation: 554.93±48 m  
Accuracy: 52.1 m  
Time: 13-07-2022 13:55

Powered by NoteCam





Latitude: 18.147435  
Longitude: 74.976535  
Elevation: 526.0±12 m  
Accuracy: 27.6 m  
Time: 13-07-2022 13:56

Powered by NoteCam





Latitude: 18.147334  
Longitude: 74.976383  
Elevation: 519.18±16 m  
Accuracy: 12.9 m  
Time: 13-07-2022 13:56

Powered by NoteCam







Latitude: 18.148077  
Longitude: 74.976708  
Elevation: 522.02±12 m  
Accuracy: 40.6 m  
Time: 13-07-2022 14:03

Powered by NoteCam





Latitude: 18.147601  
Longitude: 74.977441  
Elevation: 536.46±12 m  
Accuracy: 23.9 m  
Time: 13-07-2022 13:38

Powered by NoteCam



Latitude: 18.147258  
Longitude: 74.976475  
Elevation: 537.13±24 m  
Accuracy: 33.0 m  
Time: 13-07-2022 13:58

Powered by *NateCam*





Latitude: 18.148119  
Longitude: 74.976733  
Elevation: 516.12±12 m  
Accuracy: 9.6 m  
Time: 13-07-2022 14:03

Powered by NoteCam